

Why Forever?



FOREVER

ARE YOU FACING CHALLENGES IN YOUR JOB?



Uncertainty of Future



Job Security



Stressed Out



Health Issues



No Family Time



Unhappy or bored with your current work



Salaried Income with no scope of growth

ARE YOU FACING CHALLENGES IN YOUR BUSINESS?



Competition



Not enough
Profit Margin



Increasing Overheads



Stressed Everyday



No Family Time



Unhappy or bored with
your current business



Health Issues

ARE YOU A YOUNG ADULT LOOKING FOR AN OPPORTUNITY?



Financial Challenges



Not in Control



Lack of Dignity



Hazardous Working
Conditions



There is no meaning
in your Current Role



Desire to Achieve



Low Self-Esteem

YOU CAN FULFILL YOUR DREAMS



Financial Freedom



Peace of Mind



Build a Secure Future



Improved Lifestyle



Family Holidays



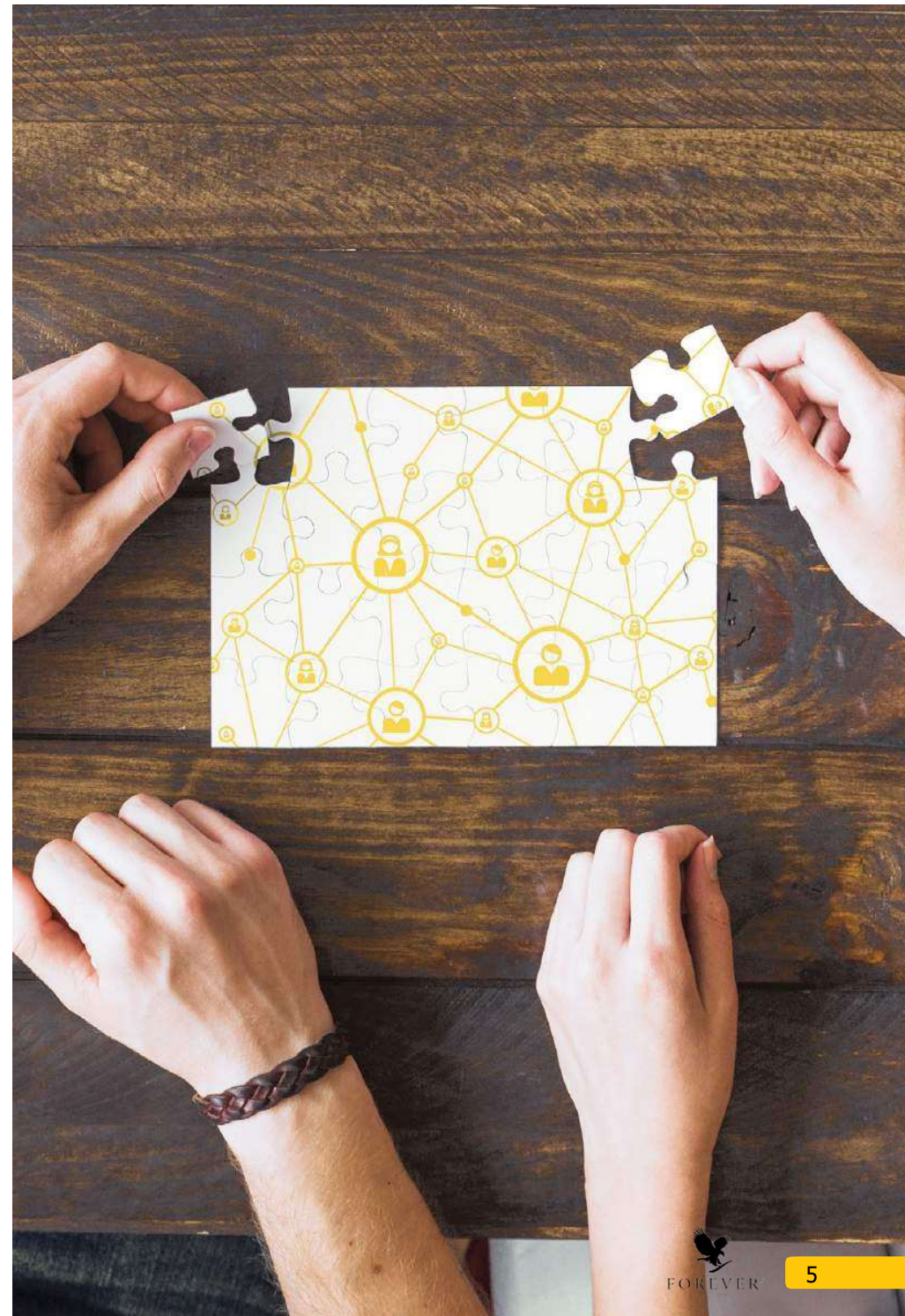
Recognition for Achievements

**AND SO
MUCH
MORE...**

NETWORK MARKETING IS THE SOLUTION

A Good Network Marketing should have the following

- **Impressive Track Record**
Good background, financial stability & wide-reach
- **Amazing Products**
Should be natural, cost effective & acceptable world-wide
- **Excellent Compensation**
More benefits for the member, unique & equal around the world



WHY NETWORK MARKETING?

A Good Network Marketing should have the following



Low (or no) risk business ownership:

It takes **negligible start-up** costs, plan and speed



Extra income:

Individuals set their **own financial goals**, business plan and speed



Flexibility:

Individuals choose **when, how and how much** they want to work



Performance pays:

The greater the effort, the greater your **earning potential**

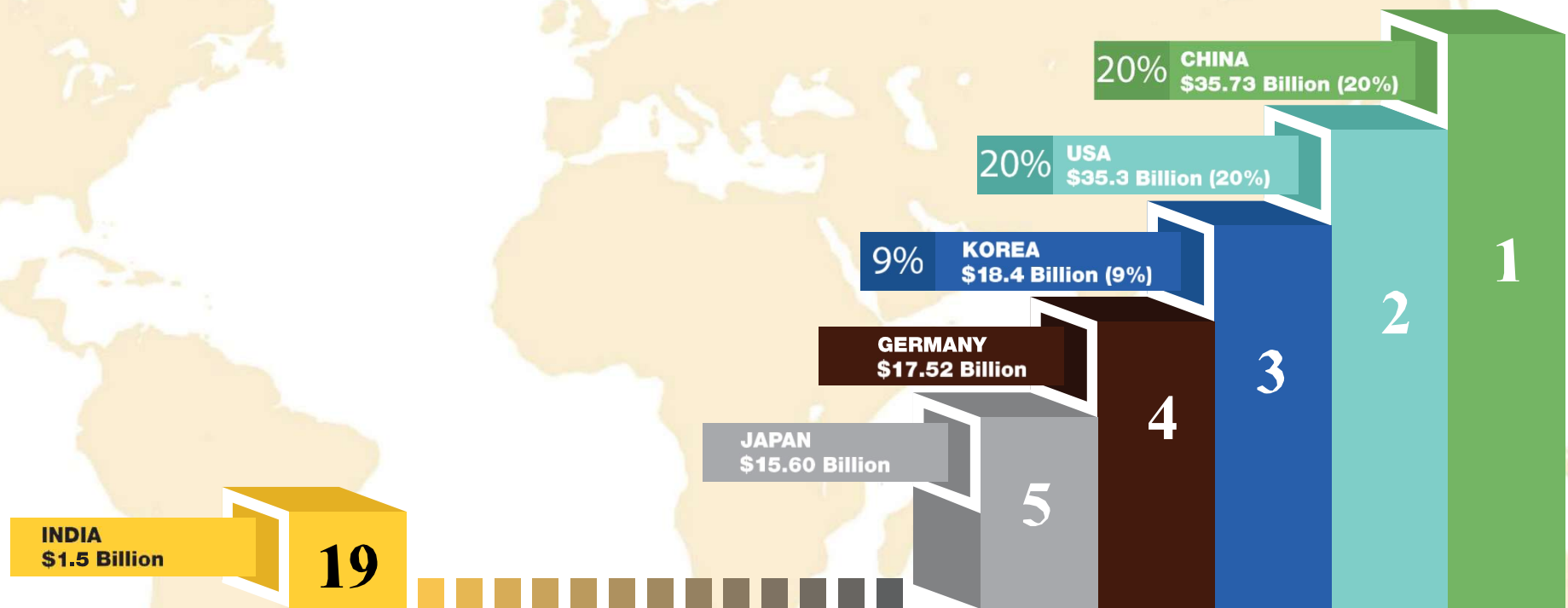


Training and mentorship:

It offers the chance to develop business expertise through free training, education and **mentoring** by experienced leaders



FACTS ABOUT NETWORK MARKETING - GLOBAL 2018-19



FACTS ABOUT NETWORK MARKETING - GLOBAL 2018-19

- Every region reported growth in its sales and **80%** of the countries around the world reported an increase in both sales and people joining
- Global Network Marketing industry stood at around **\$193 billion** in 2018 showcasing a growth of **1.2%** from the industry value of \$190.5 billion in 2017
- **China became the global leader** in sales with annual sales of \$35.7 billion contributing 20% to global sales
- Closely **followed by US** with revenue of \$35.3 billion
- Network Marketing worldwide encompasses **11.8 million** independent representatives



FACTS ABOUT NETWORK MARKETING - INDIA

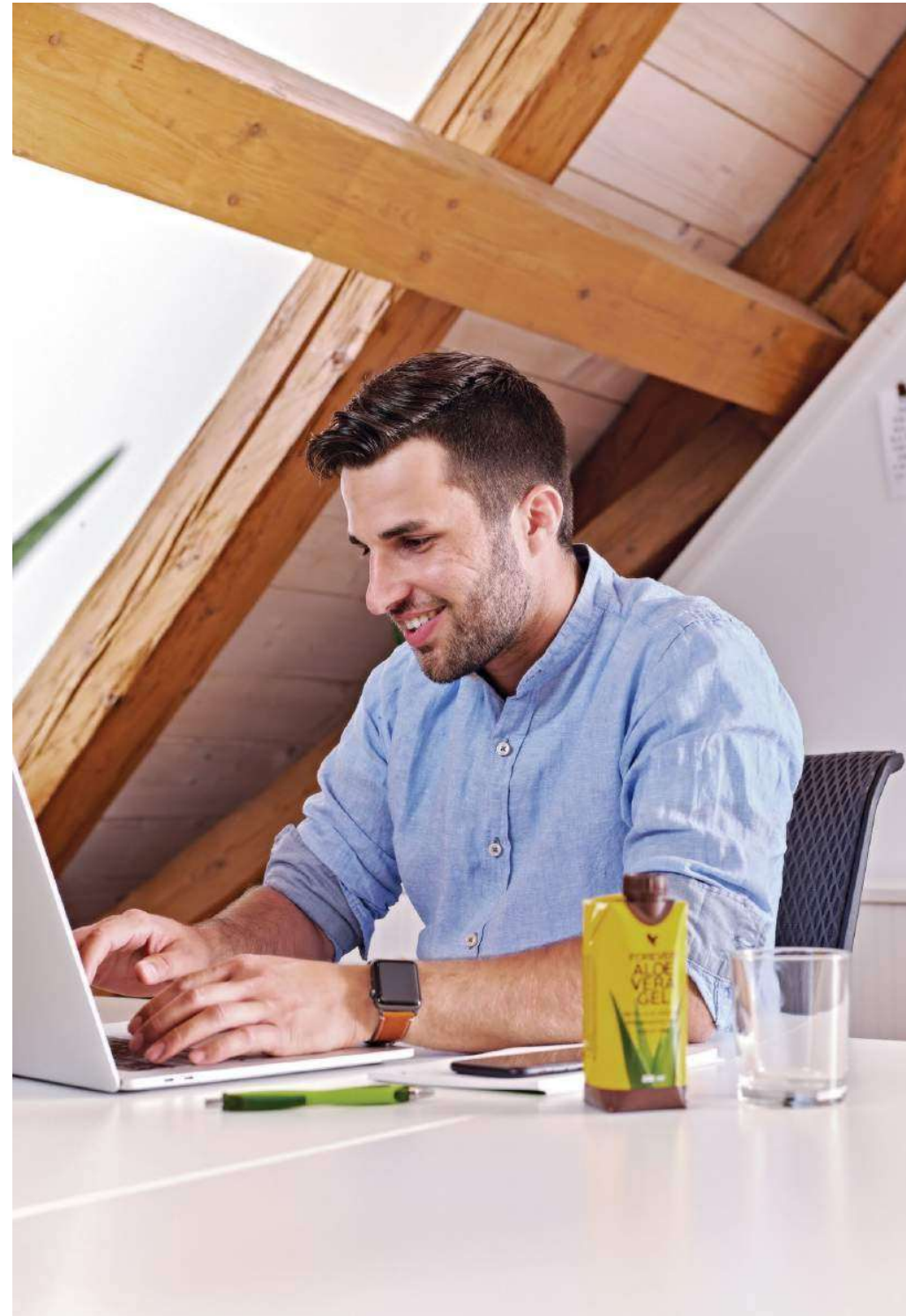
2018-19

- Industry has more than **doubled** since 2011 and stood at ` 13,080 Crores
- In 2018 it has grown at **13% from the previous year**
- Average Sales/ Distribution in a year is **\$300** in comparison to global average of \$1700 as per ASSOCHAM
- Wellness products contribute more than **50%** of Sales
- Cosmetics and Personal Care contribute more than **25%** of sales
- The industry contribution to the exchequer was around ` **2,500** Crores
- Number of Active Network Marketers (placed at least 1 order in 3 months) was around **57 lacs** growing at 6% from previous year
- Male to Female ratio of Network Marketers stands at **50:50**
- **North region at 27%** Contribution is followed by West at 25%
- **Maharashtra at 13.3%** has the highest share followed by West Bengal at 9%



NATURE OF NETWORK MARKETING - INDIA

- It is **not dependant** on region, culture or age
- It **does not** require education, experience or funds
- It is not about just selling products but it gives the entrepreneurs an **opportunity to own an independent business** with low start up costs
- Many join because they **love a company's products** or services and want to purchase at a discount
- Others **sell to friends**, family and communities and earn commission
- The most successful are those who sponsor others and mentor them to build successful business



GROWTH DRIVERS FOR NETWORK MARKETING - INDIA

- **Regulatory landscape** became positive due to implementation of Network Marketing guidelines by various states
- **Recognition of Network Marketing** as a Non Store Retail model
- Entrepreneurship **opportunity** for unemployed
- **Additional** source of Income for the employed
- Adequate **training** for skill development by Network Marketing companies
- Focus on **women empowerment**
- Rise of **social media** helps create an effective and economical network of buyers, sellers and prospects



FOREVER: YOUR OPPORTUNITY

Started in 1978 in Phoenix, Arizona, USA

First opportunity meeting held on 13th May, 1978



THE MAN BEHIND THE VISION - Rex Maughan

- For years he was searching for a business idea that would bring together two biggest goals in his life – **better health** and **financial freedom**
- In 1978 he found what he was looking for, and invited 43 people to attend the first ever FLP meeting in **Tempe, Arizona**
- From this single event, a journey was launched that has led to unimaginable **business success**
- With years of inspirational leadership and sound management principles, Rex Maughan has dedicated most of his life to helping people **achieve what they want in life**



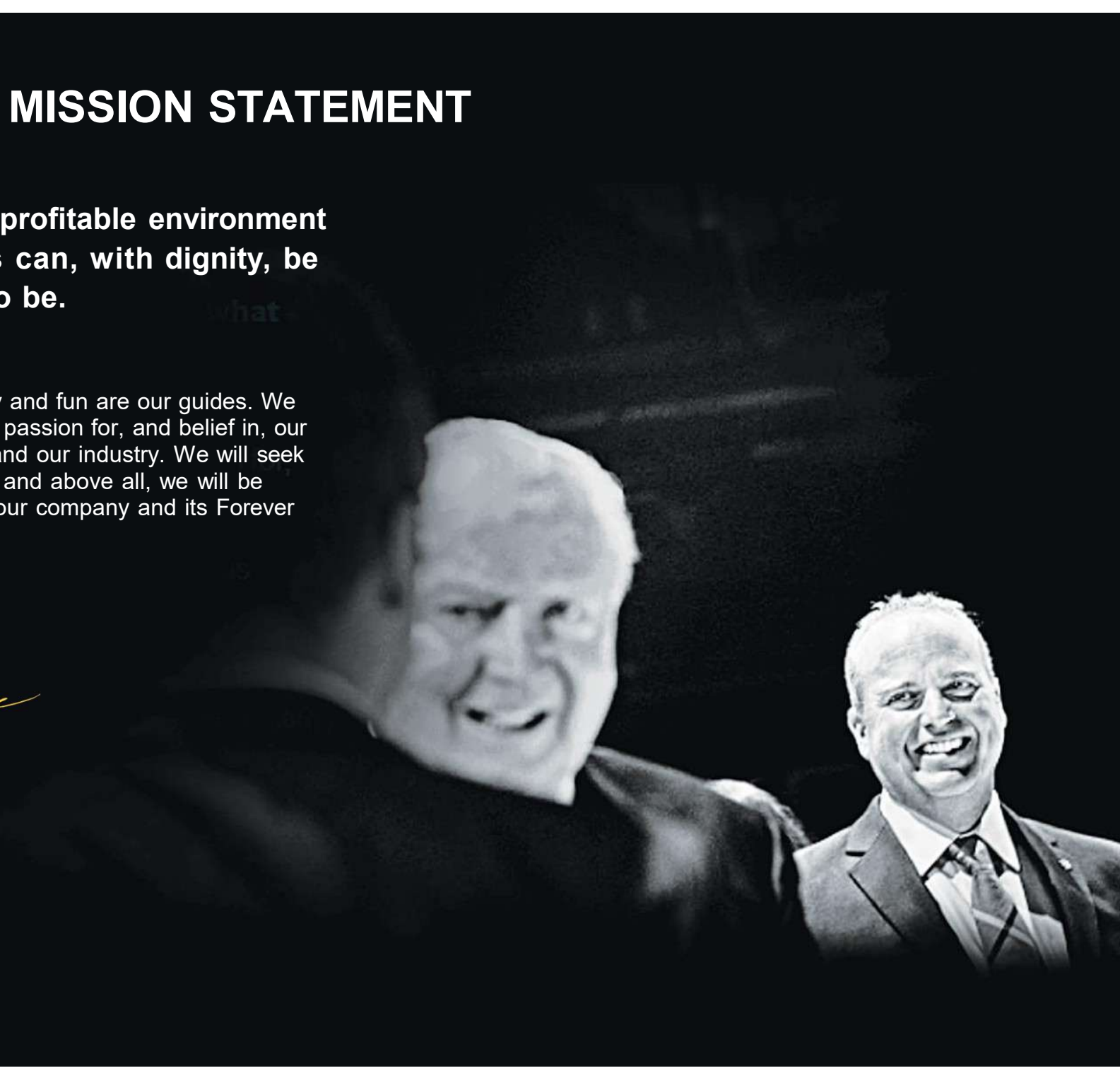
FOREVER'S MISSION STATEMENT

We will create a profitable environment where individuals can, with dignity, be what they want to be.

Where integrity, empathy and fun are our guides. We will create and cherish a passion for, and belief in, our company, our products and our industry. We will seek knowledge, and balance and above all, we will be courageous as we lead our company and its Forever Business Owners.



Rex Maughan
Chairman and CEO,
Forever Living Products



WHY FOREVER LIVING PRODUCTS?

“The **Power of Forever** is the **Power of Love.**”





CASH RICH & DEBT FREE

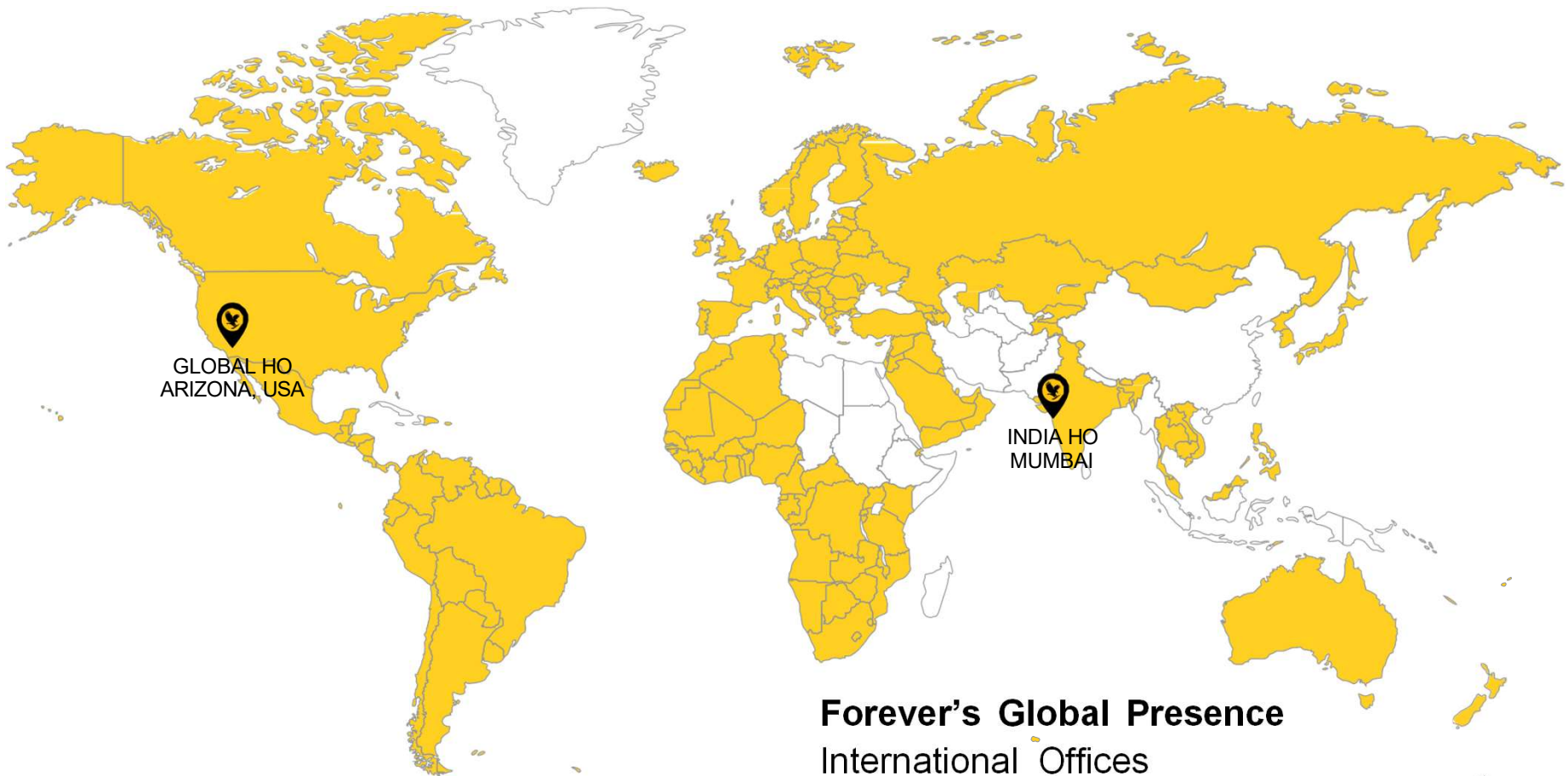
Over \$1.5 billion in assets. Privately Owned

GLOBAL MARKET PLACE

Operating in over 160 countries

Over 40 years of continued growth

With more than 10 million FBOs worldwide



Forever
World's
Best
Aloe Vera
Company



Our entire operation begins here...

- Our Plantation in **Texas** and **Dominican Republic** is spread over more than **7500 acres** with **50 million** plants producing **65 million** pounds of Aloe Vera each year
- These places remain hot and humid throughout the year and provide the **ideal soil** and **growing conditions** for Aloe Vera

FOREVER - VERTICALLY INTEGRATED COMPANY

Forever owns/controls the cultivation, manufacturing facilities, research & development, quality control of laboratories, and even the distribution channels



FOREVER - OUR PROCESS

From Plant, to Product, to You

It ensures cost and quality control of the products at every step of the process to give the best product



STATE OF THE ART MANUFACTURING

- **Aseptic** packaging allows us to produce delicious, **preservative free** Aloe Drinks
- Inner leaf Aloe Vera gel is flash heated to **reduce** bacteria and lock in the freshness and valuable nutritional benefits by a **Patented Stabilisation Process**
- This provides **300% increase** in vitamin retention in our Aloe
- Forever uses a **custom blending** and packing unit called a VMI mixing platform
- It reduces the **time, energy and manpower** needed to make products



FOREVER NUTRACEUTICAL - EXCEEDING STANDARDS

Forever Living has committed itself with the highest available industry standards

- Located in Tempe, Arizona, its an **82,500 sq ft** facility
- We boast **ISO 17025** certification reserved for 3rd party labs
- FN performs **333 different types** of Quality Tests
- **1.5 million quality tests** are performed each year



ALOE VERA OF AMERICA (AVA) - MANUFACTURING HUB

- Over the last 5 years, Forever has invested **21 million** in state-of-the-art equipment
- AVA ships over **4,250 cargo** containers of Forever products to over **160 countries** every year
- **8 million gallons** of pure aloe is used in product manufacturing each year
- We continuously test new methods for **growing, fertilizing and cultivating** our Aloe
- That's how we get thickest and most **nutritious** leaves with **freshest** taste and **highest** nutritional markers
- **Always evaluating** existing products from **global regulatory standards** and **launching new products**



PACKAGING WITH EFFICIENCY AND CARE

- 6 tablet machines produce **3 million tablets/ day**
- Pouching machine produces **1620 pouches/ hour**
- Stick packing machine produces **324,000 sticks** of Argi+ per day
- The blister card packing machine fills **1980 blister cards** per hour
- Bottle filling machine fills **2.4 million softgels** every day
- Tube filling machine fills **200,000 tubes** of skincare products every day
- Forever's shipping boxes use **85% recycled** materials and are printed with environmentally friendly inks



DOING OUR PART FOR THE ENVIRONMENT

- **Environment** is important to Forever. For the last 3 years AVA has received the **Blue Thumb Award**
- Water usage **reduced** by 90% by using Solar Powered Pumps and New Drip Irrigation Systems
- **Reused** water is used to rinse our plants by putting it back in the fields
- After removing the gel, the rind is tilled back into the ground to **fertilize** the soil
- Did you know 20 Aloe plants convert the same amount of **CO₂ into Oxygen** as a tree?
- In our fields 50 million plants cleanse the earth of **hundreds of million tons of CO₂** every year
- Lighting has been converted from Halogen to LED leading to **80% reduction in energy** consumption
- We have also been **awarded** for **Pollution prevention**



FOREVER DIRECT

- A GLOBAL CONNECTION

- Forever Direct (FD) in Netherlands supports product distribution in over **160 countries**
- Owning our distribution channels allows us to **control cost**, ensure **stringent quality standards** and deliver products **faster**
- FD provides **labelling and combo** pack services to 90 countries and provide **bulk replenishment** to local warehouses in Africa, Europe and Middle East



FOREVER - SUPERIOR QUALITY CONSUMABLE PRODUCTS

Safe, Natural, GM free Ingredients



FOREVER - WORLD'S BEST PLAN

Most
rewarding Pay-
out up to 48%

Generous and
fair Business
opportunity

48%



FOREVER - YOUR FUTURE IS SAFE WITH US

Gregg Maughan

Gregg Maughan
President,
Forever Living Products



COUNTRY SALES MANAGER - INDIA

*“Do you know all things are created twice.
First, you create them in your mind and then physical. The
physical creation follows the mental, just as a building follows
a blueprint. If you don’t make a conscious effort to visualize who
you are and what you want in life, then you empower other people
and circumstances to shape you and your life by default. If you
don’t dream... you will not Achieve.*

*What would you rather do? Dream... It doesn’t cost any money
to dream. FLP helps in making those big dreams come true by
removing the bottlenecks on the way.*

We are forever.



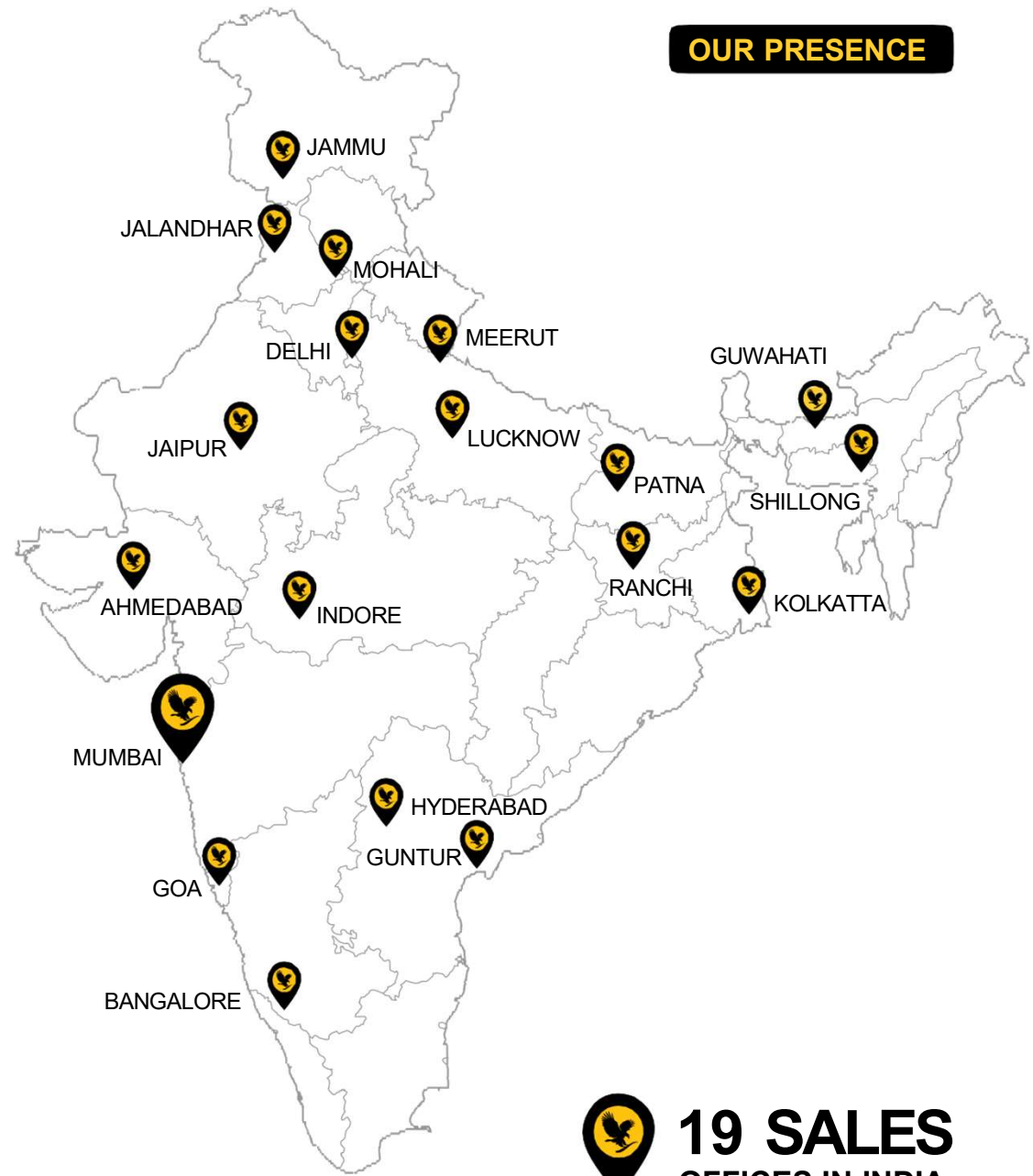
Harish Singla
Country Sales Manager



FOREVER LIVING PRODUCTS INDIA

Interesting Facts

- Country Sales Manager - Mr. Harish Singla
- Established in Mumbai in the year 2000
- Company owned, India Head Quarter Building in Bandra, Mumbai (HO)
- 19 Sales Offices
- More than 1 million FBOs
- Turnover in excess of 500 crores



OUR PRESENCE



19 SALES
OFFICES IN INDIA

FOREVER - YOU CAN LEAD A BETTER LIFE WITH US

Make your choice

Become a
Preferred
Customer

Become an
FBO & Build a
Business



FOREVER - BECOME A PREFERRED CUSTOMER

A registered Forever product user

Can purchase products at a discount and enjoy the following benefits

Access to
world class
quality
Products

Convenience
of online
shopping.
Delivered
directly to your
Home

100% Product
satisfaction
or Money
back guarantee

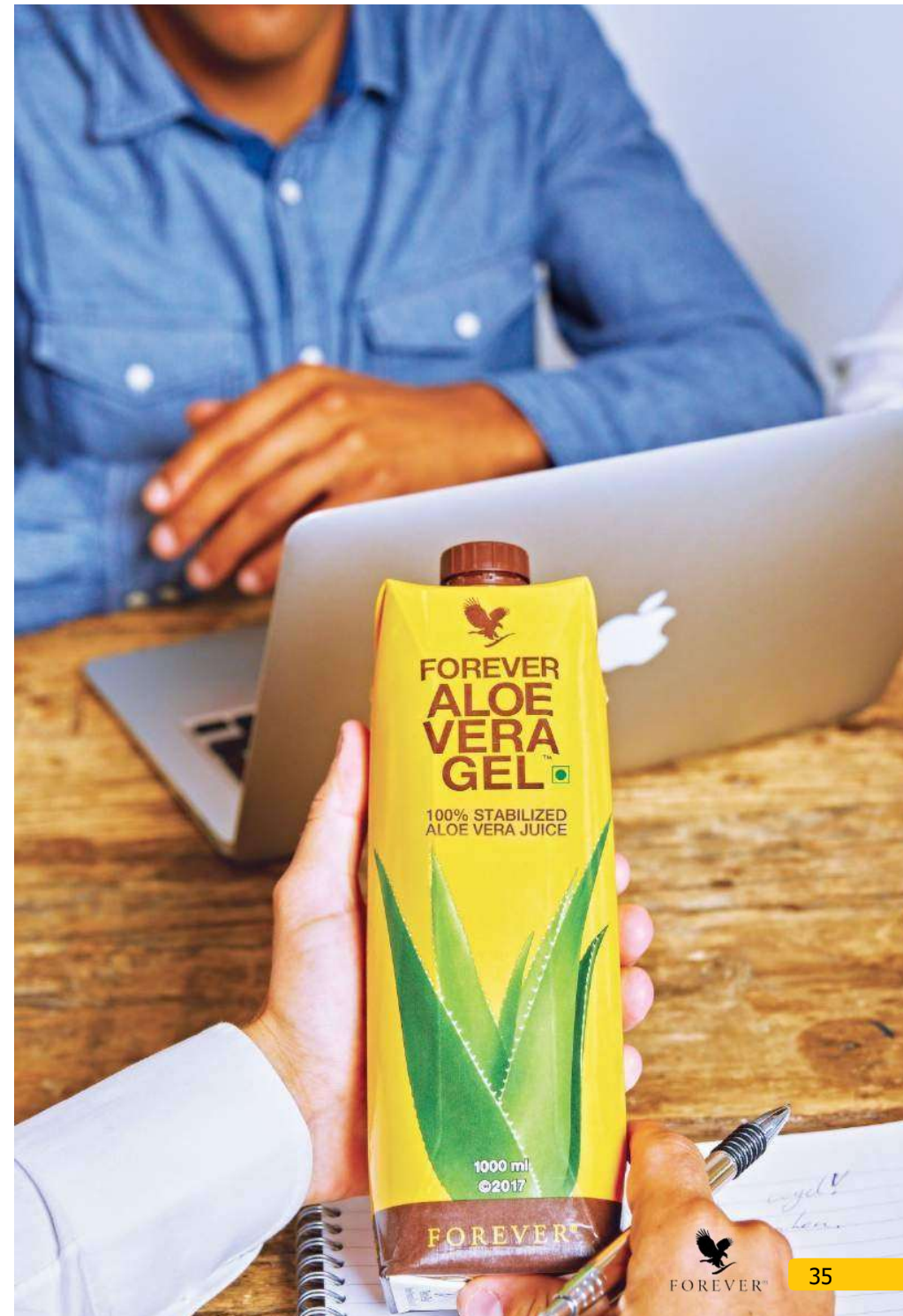
Participate
in attractive
loyalty program



FOREVER - BECOME AN FBO & BUILD A BUSINESS

An Entrepreneur who can sell Forever products to customers

Can mentor teams and has the following privileges:



FOREVER PRODUCTS - PURE STABILIZED ALOE VERA IS THE HEART OF IT'S ENTIRE PRODUCT LINE

If there is one thing Forever knows, it's aloe vera. In fact, we consider ourselves to be the aloe experts. We are proud to be the largest grower and manufacturer of aloe vera and aloe vera products in the world.



FOREVER - HARVESTING BY HAND

Forever Living has committed itself to the highest available industry standards

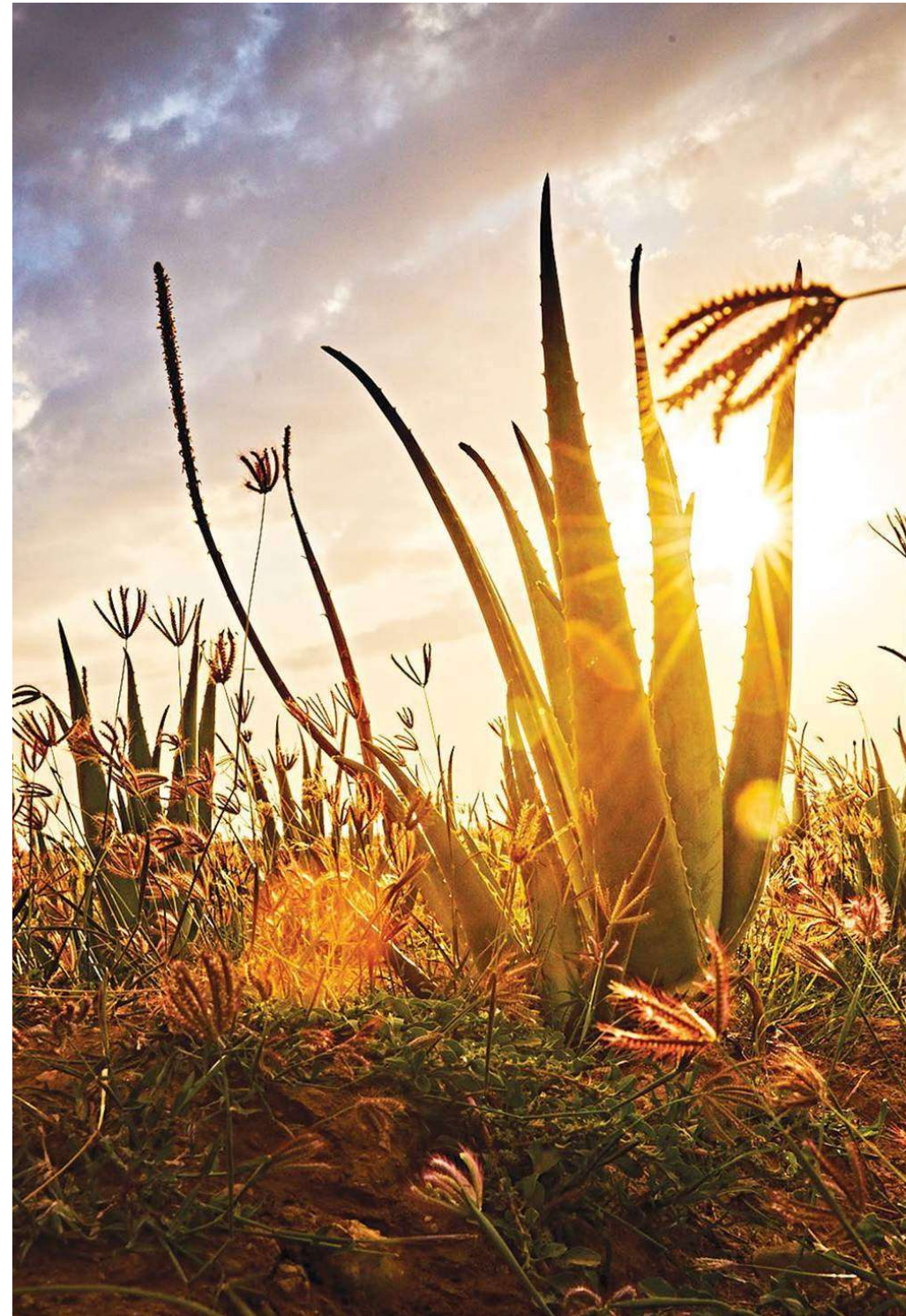
- Once a year after it is planted our Aloe is at the **peak of leaf thickness** and nutrient content
- We carefully harvest the lower leaf **by hand** and let the inner leaf grow
- This ensures that each leaf is guaranteed to be cut from the plant at the absolute **best time**
- **Hand harvesting** helps avoid usage of large machines leading to zero plant damage
- We **Hand fillet** every leaf to extract only pure, potent inner leaf aloe vera gel
- Our aloe is **inspected by hand** to ensure only inner-leaf aloe vera gel makes it into our products



FOREVER - THE RIGHT VARIETY

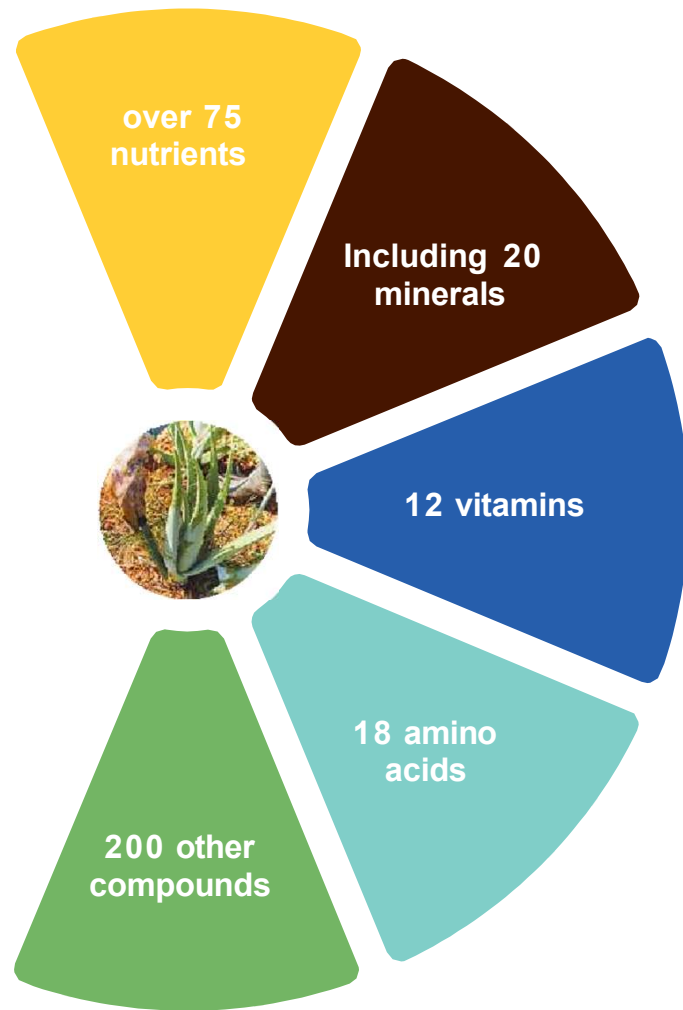
Aloe Barbadensis Miller

- There are over 400 species of Aloe Plants in the world but the best is **Barbadensis Miller** and that is what we grow
- It is most nutritionally **valuable** to human beings and nourishes the body from inside out
- One of the **oldest Botanicals** on record, dating back to 2200 BC used for its soothing properties



NUTRIENT RICH

The Aloe leaf contains



ALOE VERA WORKS IN 3 STAGES

- **Cleansing Stage**

- i. Lignin
- ii. Saponin

- **Nourishment Stage**

- i. Vitamins
- ii. Minerals
- iii. Amino acids

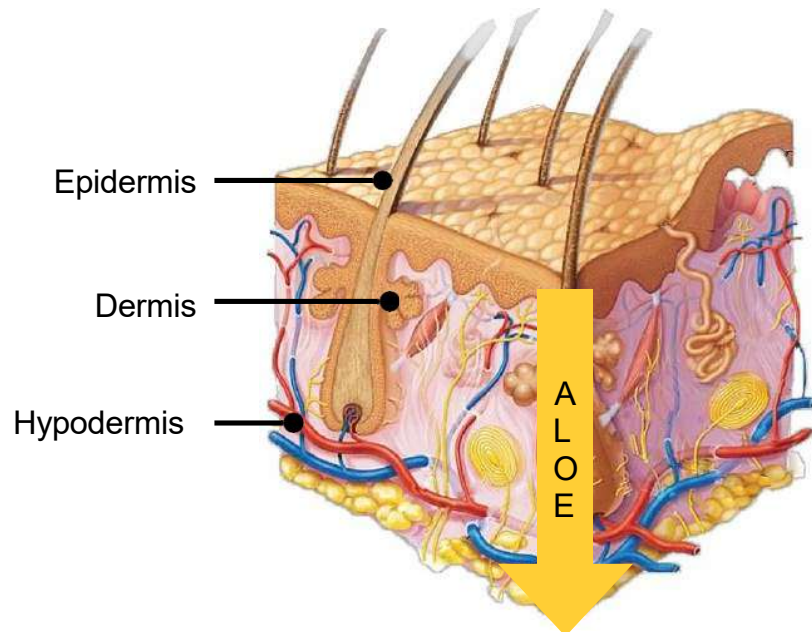
- **Therapeutic Stage**

- i. Enzymes
- ii. Anthraquinones



HOW ALOE VERA WORKS EXTERNALLY?

- Small molecular structure
- Component Lignin helps penetration of skin
- Natural cleanser Saponin cleans with sweeping action
- Similar pH balance as skin

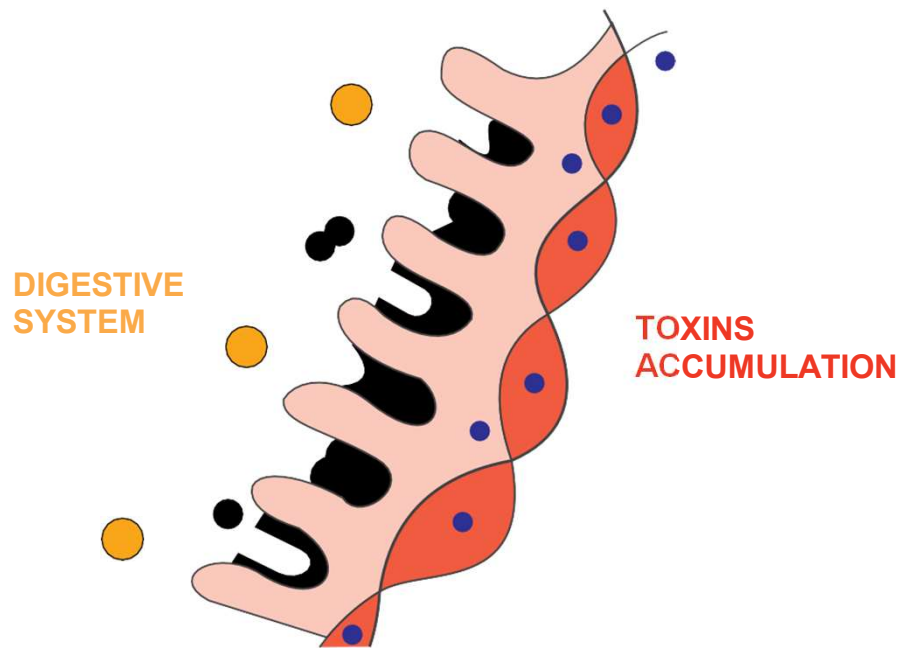


CROSS-SECTION OF SKIN



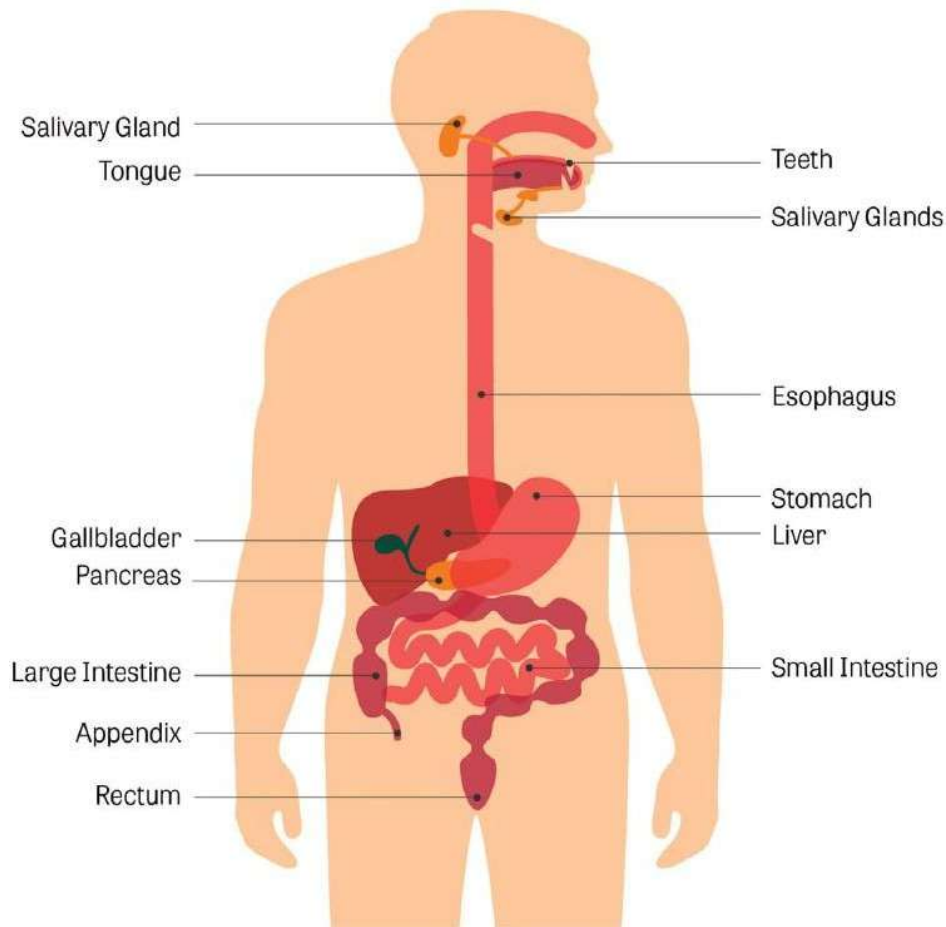
HOW ALOE VERA WORKS INTERNALLY?

- Villi absorb nutrients from food
- Nutrients are easily absorbed in the toxin free lining
- Toxins block the lining preventing proper nutrient absorption

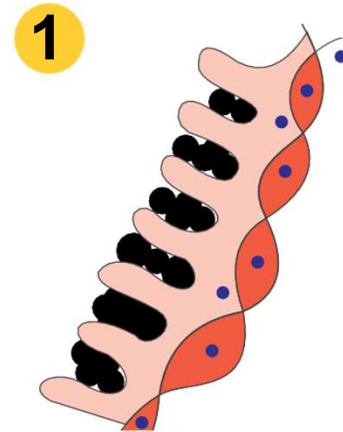


MICROSCOPIC SECTION OF SMALL INTESTINE SHOWING VILLI

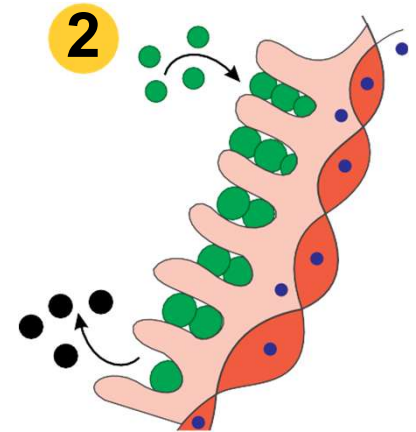
THE DIGESTIVE SYSTEM



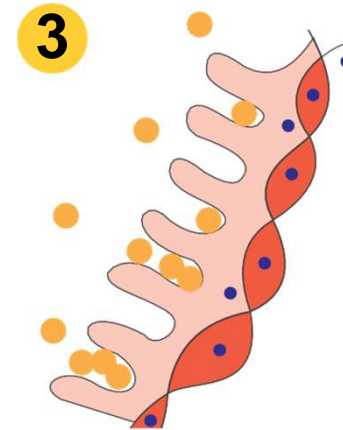
TOXINS ACCUMULATION



CLEANSING ACTION OF ALOE



ABSORPTION OF NUTRIENTS



WHY FOREVER ALOE VERA?

Aloe Vera whole leaf V/S Forever Aloe Vera Gel

Aloe Vera whole leaf

- Consists of Leaf, Sap & Gel
- Outer leaf has a strong laxative agent that should not be taken internally
- Loss of potent nutrients due to oxidation
- Consistent colour due to addition of bleaching agents
- Strained pulp



Forever Aloe Vera Gel

- Stabilized Aloe Gel contains only the nutritious inner gel
- 100% suitable for internal consumption
- Stabilization process ensures no loss of nutrients
- NO artificial colouring and flavouring
- Not homogenised or filtered. With Aloe Vera pulp



FOREVER ALOE VERA GEL

Aloe – Just as Nature Intended

- Fresher tasting, natural & soluble pulp
- Certified by the IASC for potency (Significantly higher levels of acemannan) and purity (99.7%)
- Hand harvested inner leaf Aloe Vera gel
- Sugar Free, Gluten Free
- Rich in vitamin C
- No added preservatives



FOREVER - CERTIFICATIONS



IASC Certified



Kosher Certified



Cruelty Free



Halal Certified



FOREVER - IMMUNITY



FOREVER - HEART CARE



FOREVER - BEE PRODUCTS



FOREVER - WEIGHT MANAGEMENT



FOREVER - JOINT CARE



FOREVER - NUTRITION



FOREVER - DAILY SKINCARE



FOREVER - TARGETED SKINCARE



FOREVER - SONYA DAILY SKINCARE for combination skin





FOREVER - INFINITE for mature skin



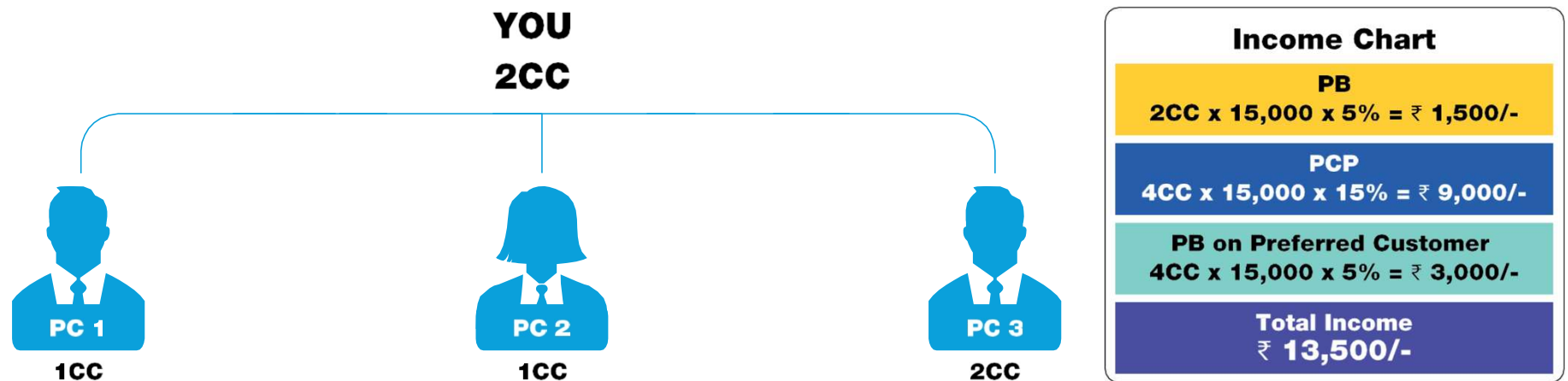
FOREVER - PERSONAL & HOUSEHOLD PRODUCTS



FOREVER - INCOME BONUS STRUCTURE

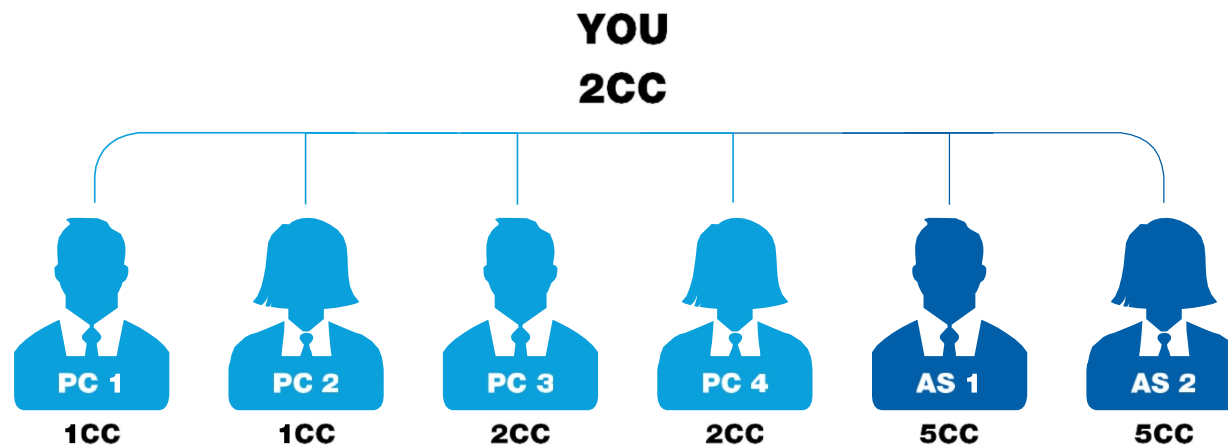
				
Asst. Supervisor	Supervisor	Asst. Manager	Manager	
2CC	25CC	75CC	120CC	
5%	8%	13%	18%	
				Preferred Customer Profit
				
				Personal Bonus
				
				Volume Bonus
				
				CC = Case Credit
Preferred Customer				
Form + Age & Address Proof Minimum Billing - `1000		+15% Preferred Customer Profit		

FOREVER - INCOME POTENTIAL OF ASSISTANT SUPERVISOR



PCP = Preferred Customer Profit | PB = Personal Bonus | VB = Volume Bonus | SUP = Supervisor | AM = Assistant Manager

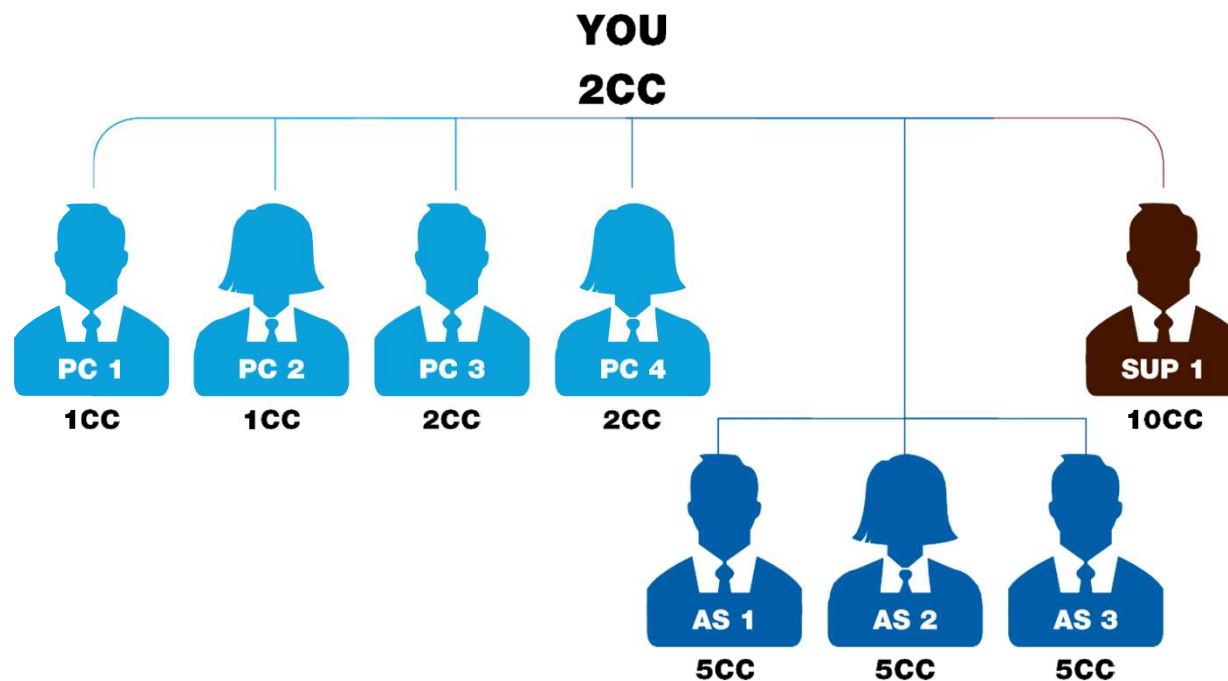
FOREVER - INCOME POTENTIAL OF SUPERVISOR



Income Chart	
PB	
$2CC \times 15,000 \times 8\% = ₹ 2,400/-$	
PCP	
$6CC \times 15,000 \times 15\% = ₹ 13,500/-$	
PB on Preferred Customer	
$6CC \times 15,000 \times 8\% = ₹ 7,200/-$	
VB on AS	
$2 \times 5CC \times 15,000 \times 3\% = ₹ 4,500/-$	
Total Income	
₹ 27,600/-	

PCP = Preferred Customer Profit | PB = Personal Bonus | VB = Volume Bonus | SUP = Supervisor | AM = Assistant Manager

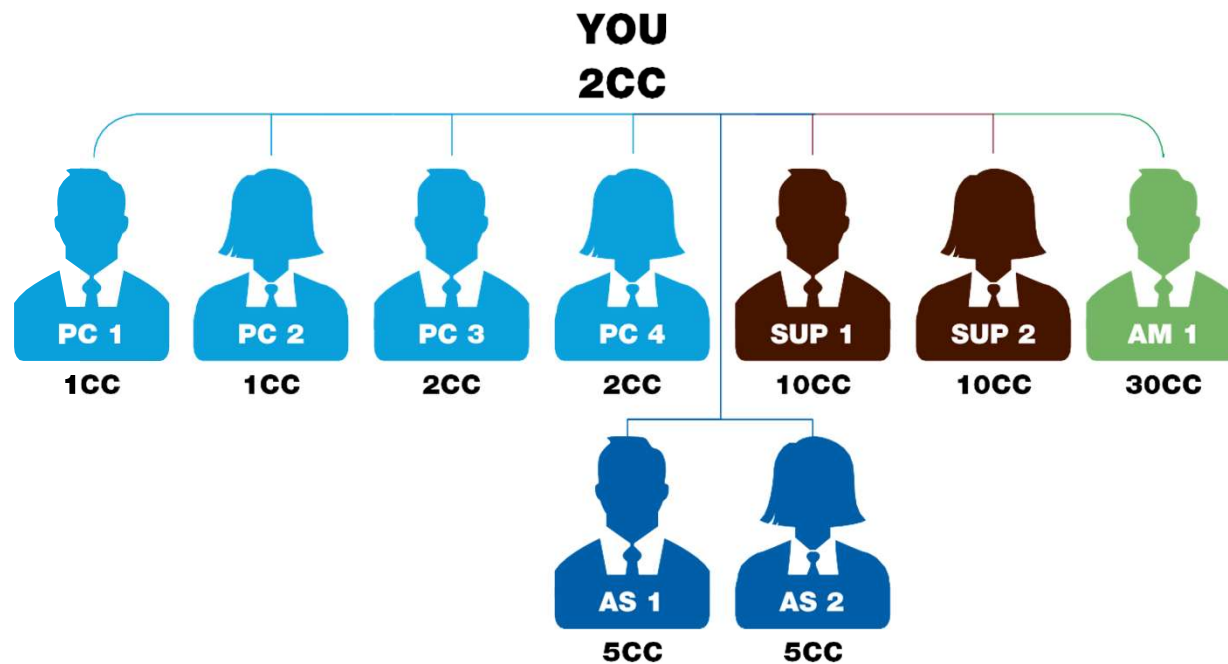
FOREVER - INCOME POTENTIAL OF ASSISTANT MANAGER



Income Chart	
PB	
$2CC \times 15,000 \times 13\% = ₹ 3,900/-$	
PCP	
$6CC \times 15,000 \times 15\% = ₹ 13,500/-$	
PB on Preferred Customer	
$6CC \times 15,000 \times 13\% = ₹ 11,700/-$	
VB on AS	
$12CC \times 15,000 \times 8\% = ₹ 14,400/-$	
VB on SUP	
$15CC \times 15,000 \times 5\% = ₹ 11,250/-$	
Total Income ₹ 54,750/-	

PCP = Preferred Customer Profit | PB = Personal Bonus | VB = Volume Bonus | SUP = Supervisor | AM = Assistant Manager

FOREVER - INCOME POTENTIAL OF MANAGER



Income Chart	
PB	
$2CC \times 15,000 \times 18\% = ₹ 5,400/-$	
PCP	
$6CC \times 15,000 \times 15\% = ₹ 13,500/-$	
PB on Preferred Customer	
$6CC \times 15,000 \times 18\% = ₹ 16,200/-$	
VB on AS	
$2 \times 5CC \times 15,000 \times 13\% = ₹ 19,500/-$	
VB on SUP	
$20CC \times 15,000 \times 10\% = ₹ 30,000/-$	
VB on AM	
$30CC \times 15,000 \times 5\% = ₹ 22,500/-$	
Total Income	
₹ 1,07,100/-	

PCP = Preferred Customer Profit | PB = Personal Bonus | VB = Volume Bonus | SUP = Supervisor | AM = Assistant Manager

WHAT NEXT AFTER MANAGER?

Senior Manager



2 Direct Managers

Soaring Manager



5 Direct Managers

Sapphire Manager



9 Direct Managers

**Diamond
Sapphire Manager**



17 Direct Managers

Diamond Manager



25 Direct Managers

**Double Diamond
Manager**



50 Direct Managers

**Triple Diamond
Manager**



75 Direct Managers

**Diamond
Centurion**



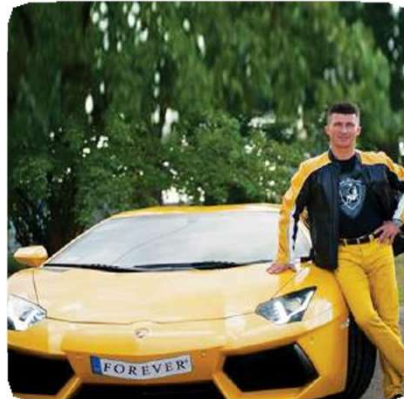
100 Direct Managers

WANT MORE, WE GOT MORE

Leadership Bonus
(Royalty Income)



Car Plan



Global Rally



Chairman Bonus



Gem Bonus



Manager Retreat

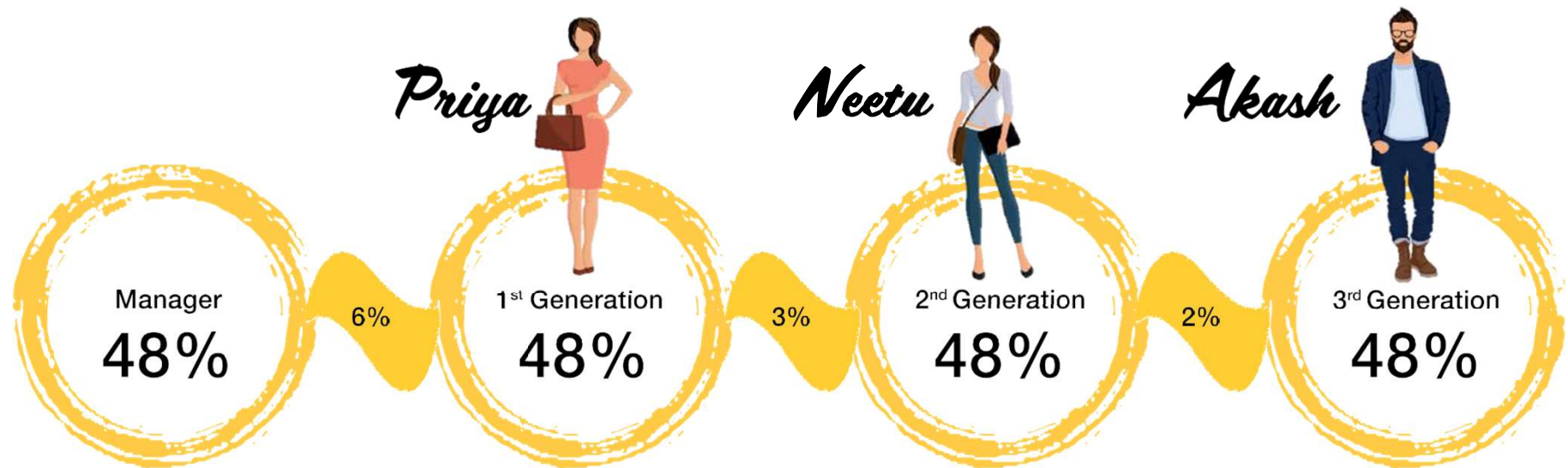


Eagle Manager Retreat

FOREVER - LEADERSHIP BONUS

Leadership Bonus (LB) is a payment of 2-6% made to a qualifying Active Manager.

It is a percentage of the BRP of the personal Accredited Sales of their downline Managers and FBOs under those downline Managers.



₹ 11,000 Royalty Style + Manager Income


**₹ 1 Lac pm
Avg. Manager
turnover**

Imagine five lines of Managers

FOREVER - GEM BONUS

A Gem Manager who has developed at least 9
1st Gen. Direct Sponsored Recognized Managers



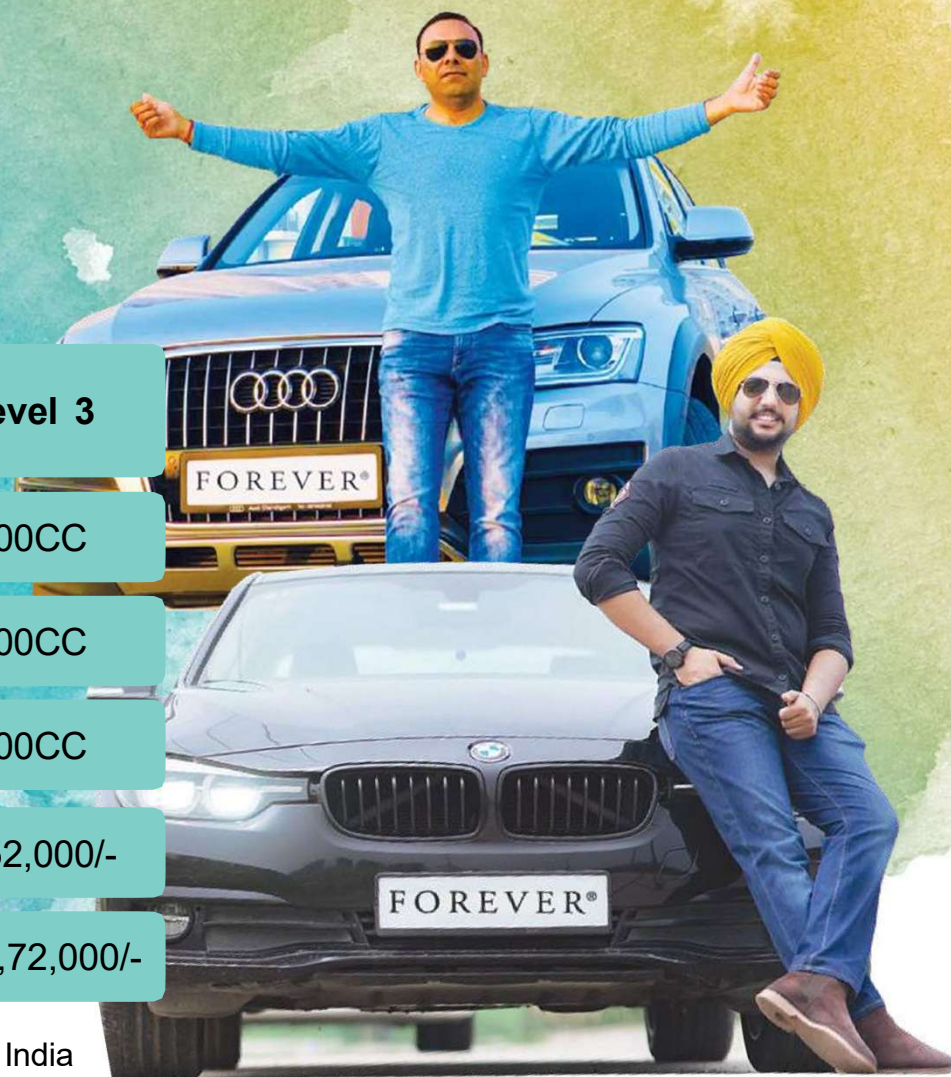
			
	9-16 Active Managers	17-24 Active Managers	25+ Active Managers
1 st Generation Managers	7%	8%	9%
2 nd Generation Managers	4%	5%	6%
3 rd Generation Managers	3%	4%	5%

Or Have 9 separate sponsored downlines, each with a Manager who has 25 or more Total Case Credits

FOREVER 2 DRIVE

You can buy a car or house or anything that you wish for

Month	Level 1	Level 2	Level 3
Month 1	50CC	75CC	100CC
Month 2	100CC	150CC	200CC
Month 3	150CC	225CC	300CC
You get per Month	`26,000/-	`39,000/-	`52,000/-
X 36 Months	`9,36,000/-	`14,04,000/-	`18,72,000/-



Over 700 qualifiers so far for the Earned Incentive Program in India



FOREVER - MANAGER RETREAT

Enjoy Luxury While Participating In Business Trips

The Company invites its qualifying Managers upto 3 Nights
& 4 Days all-expense paid Five Star Luxury stay at a
surprise destination in India

Some of our past luxury destinations



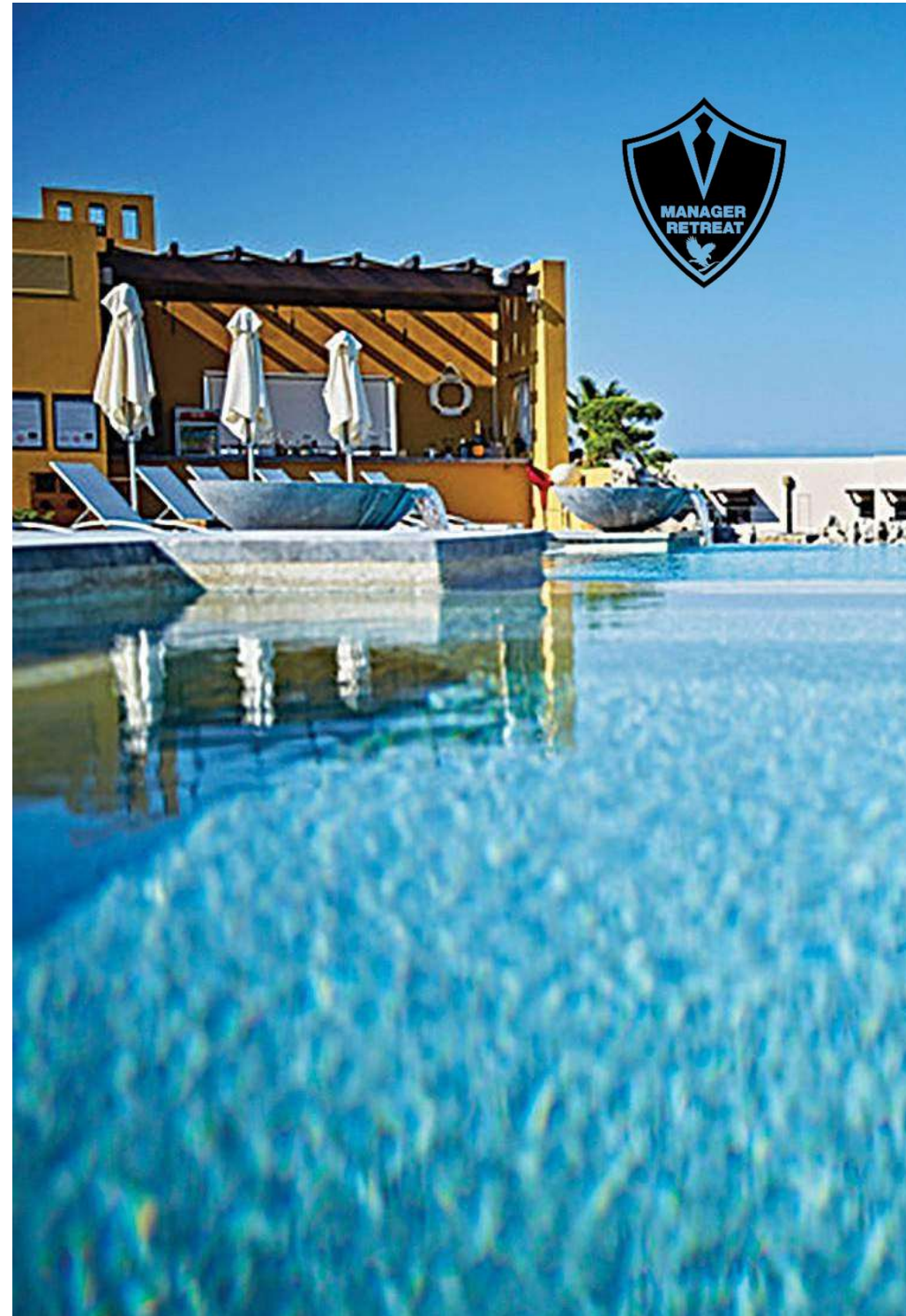
Taj Falaknuma Palace, Hyderabad



Oberoi Wild Flower, Shimla



Umaid Bhawan Palace, Jodhpur



FOREVER - EAGLE MANAGER RETREAT

See The World While You Learn

Qualifiers from all over the world travel to a predestined location anywhere in the world and get an opportunity to share and learn from the Eagles of FLP

Some of our past luxury destinations



Monte Carlo



Greece



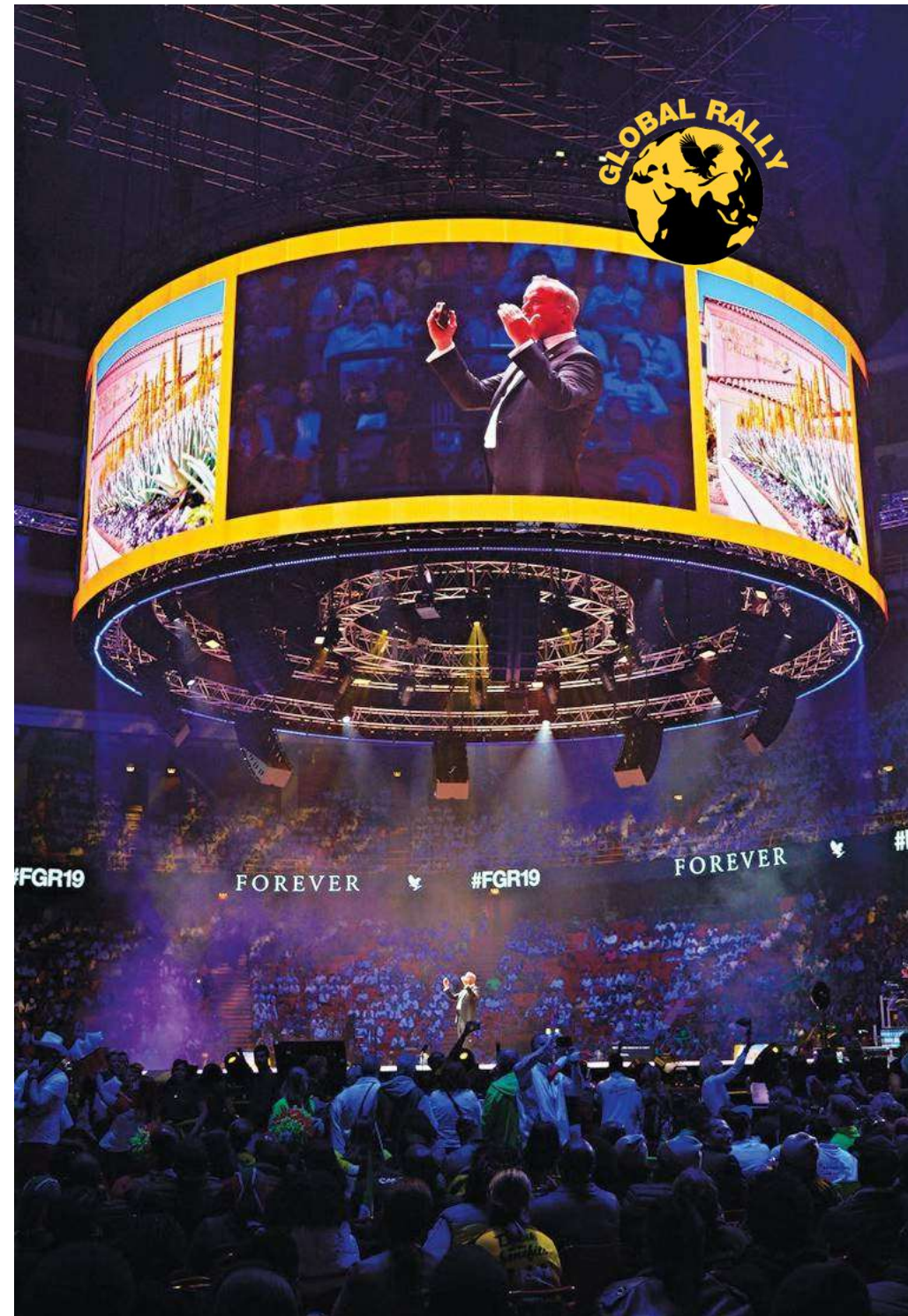
Phoenix, USA



FOREVER - GLOBAL RALLY

See The World While You Get Recognized

Qualifiers from different countries converge at a luxury destination with an all-expense-paid trip to collect big cheques and experience top notch entertainment



FOREVER - CHAIRMAN BONUS

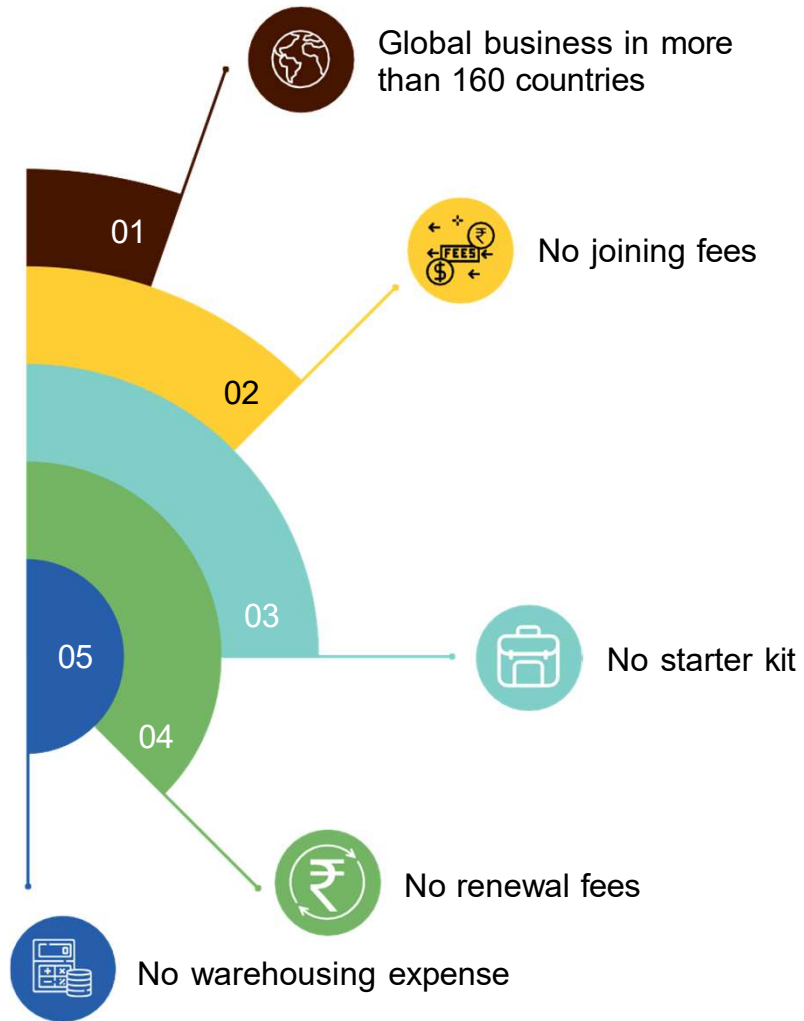
3% of the turnover of the company is shared amongst the qualifying FBOs



FOREVER



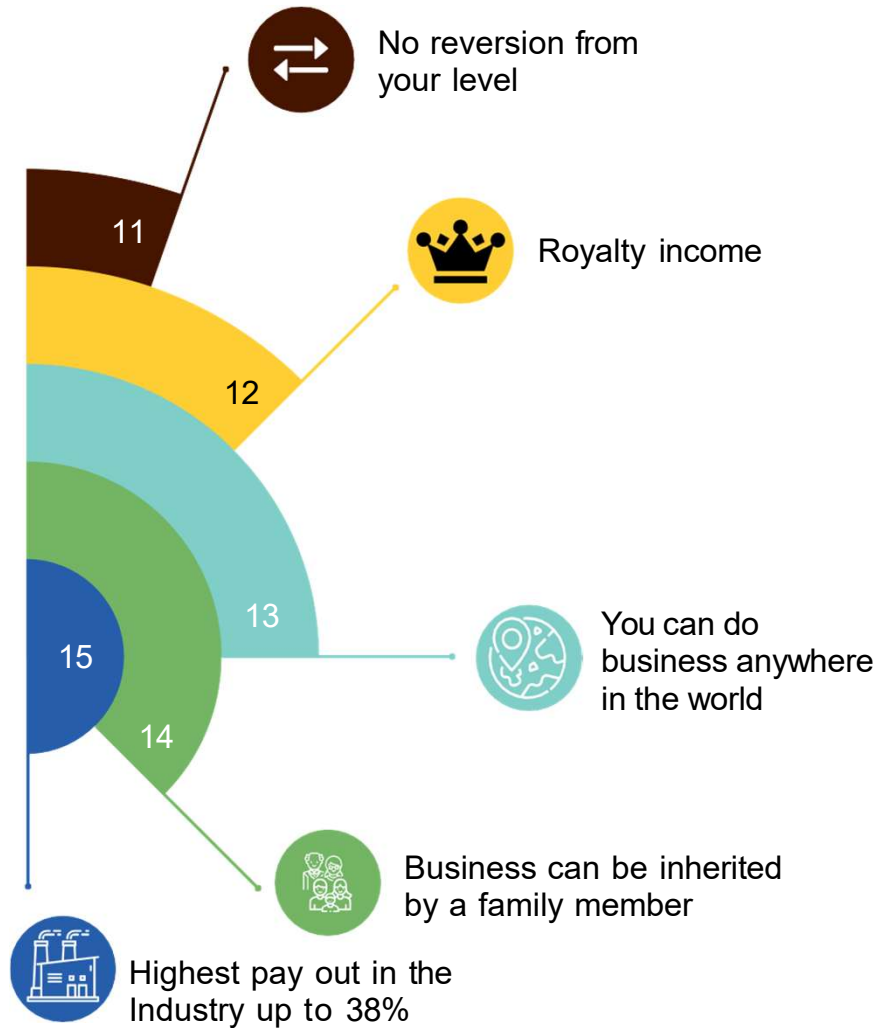
FOREVER - UNIQUE FEATURES OF OUR MARKETING PLAN



FOREVER - UNIQUE FEATURES OF OUR MARKETING PLAN



FOREVER - UNIQUE FEATURES OF OUR MARKETING PLAN



BONUSES PAID ON **143%** OF WHOLE SALE PRICE

Nobody else in the industry does that

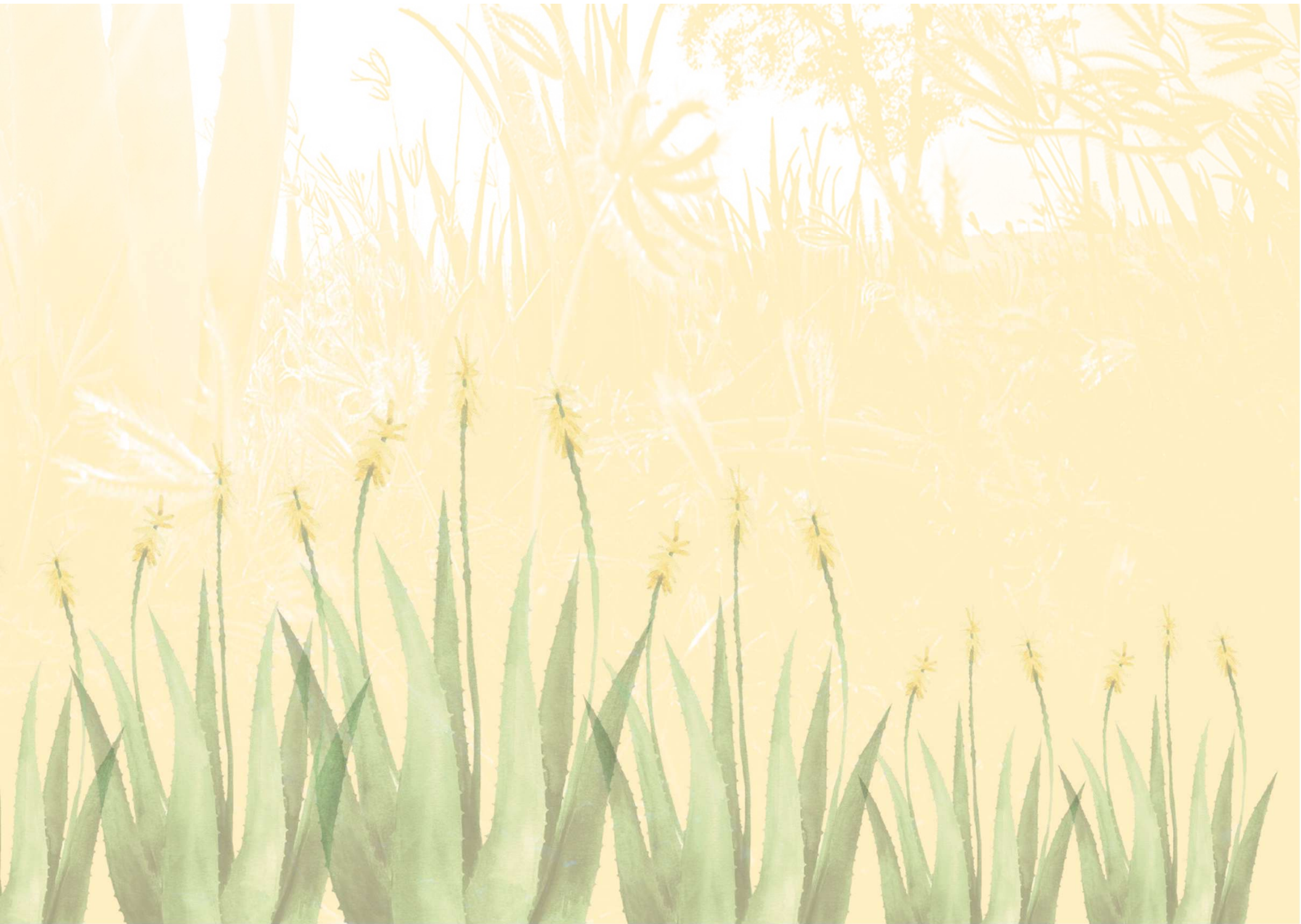


YOU HAVE THE DRIVE & THE DREAMS

We At Forever Help You Fulfill Them

*Come be a part of our
Forever Family*







REGISTERED OFFICE:

501, Sharyans Center, Above Lijjat Papad,
Opp. Bandra Railway Station, 3, Gurunanak Road,
Bandra (W), Mumbai - 400 050

CIN: U51101MH2011PTC212700

CONNECT WITH US

Customer care number - 91 22 6641 4000

Website - www.foreverliving.com

Email - flpcare@flpindia.net

SOCIAL



/flpindia



/flpindia



/flpindia



/flpindia

SKU # 81003
MRP Rs. 95/-
(incl. of all taxes)

